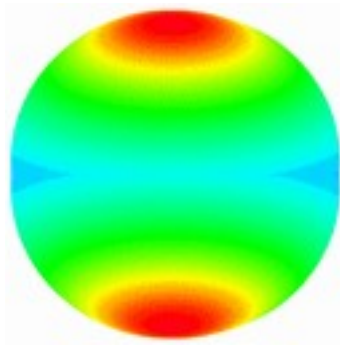


Poslaju Remote

Brought to you by



Universal Applications

Jalil Latiff – January 2012

Obtaining Poslaju Rates Remotely

This paper describes how to use the simple API (Application Program Interface) for Poslaju Services provided by. Fitrah Food Sdn. Bhd. The API can be easily used via VirtueMart in Joomla, or you can write your own routines to effect the rates calculation using the API as explained in this document.

How it Works

Subdomain *poslaju* contains a PHP program formulated to calculate the Poslaju rates for the whole of Malaysia. Postal Charges are fetched by sending a standard GET command to the URLs :-

<http://poslaju.fitrahfood.net>

or

<http://fitrahfood.net/poslaju>.

(You can also obtain the rate by sending a normal request via your browser, with the appropriate parameters, but of course the primary method and main use of this url would be by writing an application program calling it to obtain the relevant postal rate.)

When the PHP program at *poslaju.fitrahfood.net* obtains a request, it will perform the calculation and responds as follows :-

Return Values

For a *successful* get :-

total_pos_charge | zone | x

where

total_pos_charge a non zero value and is the actual charge for delivery,

zone is the calculated zone applicable (based on postcode or state),

and **x** is any other text which is normally ignored.

This charge is **inclusive of all tax and service charges**. This is what you will need to pay at the post office or pick-up person. The rates are calculated based on address or postcode of origin or pick-up point, destination address or postcode and weight of the parcel.

Poslaju Rates & Inputs

Postal Zoning and Rates

Poslaju rates are as published by POS Malaysia. The rates are based on sending and receiving zones, as well as weight. Please refer to our table [POSLAJU.pdf](#) for details.

State Codes

The State Codes sent must be according to as defined in *Appendix (1)*. A list of Malaysian postcodes is available for download, but it is likely this code will be entered by the user or purchaser in the e-commerce system and is a standard code system for Malaysia. The state codes however must be in accordance to what is defined in this API, and must therefore be defined accordingly.

Forgiveable Sins

Wrong County Code

For the moment, this API does not cater for exports outside Malaysia. Thus the country codes are ignored if wrong. A warning may be issued, but charge processing will continue.

Destination Postcode Unknown

If the destination postcode is unknown (sometime we do not know the postcode for the address of the person we wish to send a surprise gift), the POSLAJU Calculator will still proceed to return a charge. This charge is calculated on the basis of state code. In this mode, local delivery rates will never apply.

Thus for a customer to benefit from POSLAJU local charges, the destination postcode must be entered correctly.

Query Format

Getting the Poslaju Charges

The GET query **must** contain the following string parameters :-

1. rate - to indicate use of the calculator, otherwise a website will appear.
2. pos_from_country - this would be MYS – **the 3 letter code for the country** Malaysia
3. pos_to_country - the 3 letter code for the destination country (see Appendix A)
4. pos_from_state - **a two letter state code** indicating which state the parcel is from
5. pos_to_state - a two letter code indicating which state the parcel is going to
6. pos_from_postcode - **a length 5 string for the postcode** of the sender address
7. pos_to_postcode - a length 5 string for the postcode of the sender
8. pos_weight_grams - the weight of the parcel in **grammes**.

Note : All eight parameters are compulsory.

Example of a valid GET

```
http://poslaju.fitrahfood.net/?rate
&pos_from_country=MYS&pos_to_country=MYS
&pos_from_state=SE&pos_to_state=SE
&pos_from_postcode=47500&pos_to_postcode=47620
&pos_weight_grams=20000
```

Note : the query above is broken up for display reasons only. For a real query, no line breaks are allowed.

The above fetch can be read as :-

" get rate for a parcel from 47500 Subang Jaya to 47620 UEP Subang Jaya with a Load of 20kg "

The calculator will respond with a string format (**charge | zone | x**). In the example above, it will return the string "**34.34|1**" meaning :-

- the parcel is to be couriered within **ZONE 1** and
- the charge is **RM 34.34**.

Error Handling

Error Return Values

For a *unsuccessful* get :-

0 | zone | x

For any sort of error, the return value for charge is always 0. The **zone** information may still be given or it may be blank. The remaining return string **(x)** contains information on the error, should any be available. Usually **(x)** is blank.

Volumetric Charges

POS Malaysia imposes volumetric charges as laid out in POSLAJU Rates Table, document [POSLAJU.pdf](#)

This Remote POSLAJU API does not cater for volumes bigger than the maximum allowable dimension and no error check is implemented. This logistics issue, if any, should be handled directly by POS Malaysia.

Poslaju Remote The End.

Appendix (1) – Malaysia State Codes

('Johor', 'JHR', 'JH'),
('Kedah', 'KDH', 'KD'),
('Kelantan', 'KEL', 'KE'),
('Kuala Lumpur', 'KUL', 'KL'),
('Labuan', 'LBN', 'LB'),
('Melaka', 'MLK', 'MK'),
('Negeri Sembilan', 'NSE', 'NS'),
('Pahang', 'PHG', 'PH'),
('Perlis', 'PLS', 'PL'),
('Pulau Pinang', 'PPI', 'PP'),
('Perak', 'PRK', 'PR'),
('Putrajaya', 'PUT', 'PU'),
('Sabah', 'SBH', 'SB'),
('Selangor', 'SEL', 'SE'),
('Sarawak', 'SRK', 'SR'),
('Terengganu', 'TGN', 'TG')

Table 1 - Malaysia State Codes

Appendix (2) – POSKOD Malaysia

Downloadable from Poslaju Fitrah Food Website [POSKOD.pdf](#)